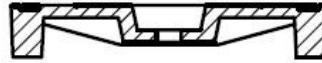


1-877-903-7246

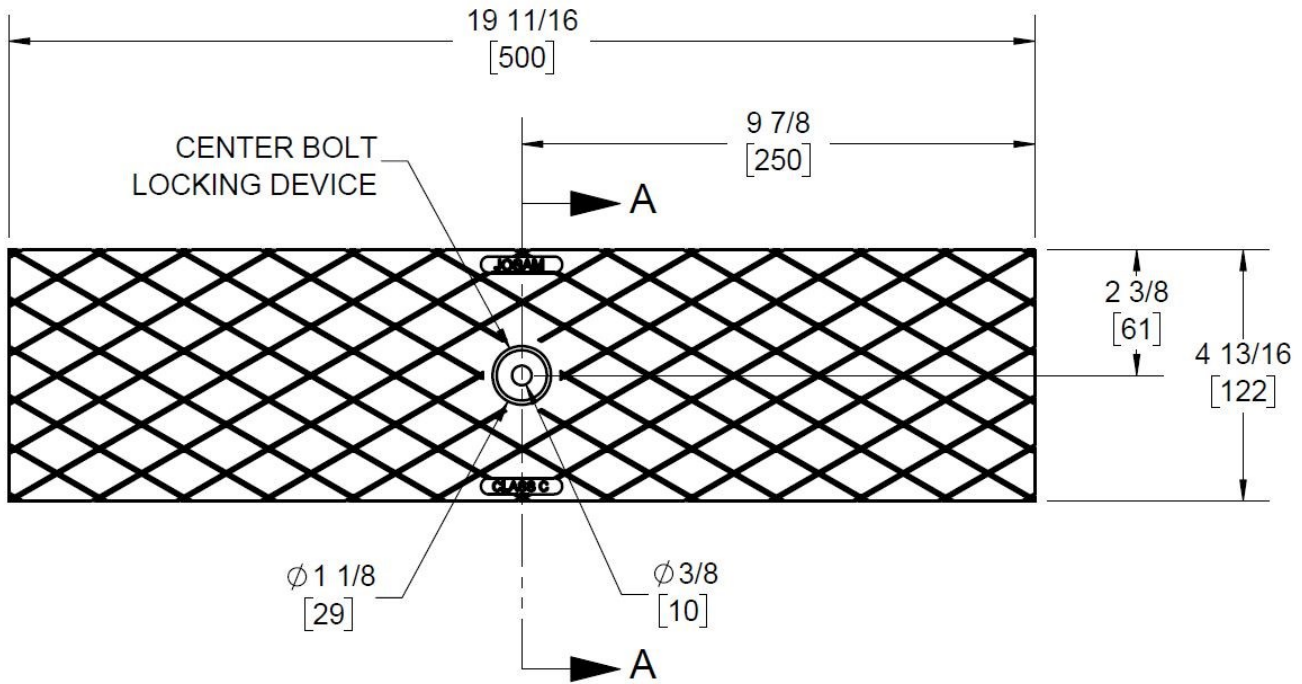


www.trenchdrainsupply.com

<p>Number 100-CIS-C-DC</p>	<p>Series CPS100 C Class Solid Cast Iron Cover Pro Plus 100</p>
--	---



SECTION A-A
SCALE 1 : 4



Manufacturer



Specification

JOSAM 100-CIS-C-DC EPOXY-COATED, SOLID CAST IRON COVER WITH CENTER HOLE FOR LOCKING BAR SECUREMENT. DESIGNED TO FIT PRO-PLUS™ 100 SIZE CHANNEL. MEETS CLASS C LOAD RATING (56,000 LBS - 1,162 PSI). COVER HAS NO FREE AREA FOR DRAINAGE, SUPPLIED BY TRENCH DRAIN SUPPLY.

DISCLAIMER - The customer and the customer's architects, engineers, consultants, and other professionals are completely responsible for the selection installation and maintenance of any product purchased from Trench Drain Supply and/or its manufacturers. TRENCH DRAIN SUPPLY MAKES NO WARRANTY, EXPRESS OR IMPLIED, AS TO THE SUITABILITY, DESIGN, MERCHANTABILITY, OR FITNESS OF THE PRODUCT FOR CUSTOMERS APPLICATION. The drawing and information provided remain the property and copyright of the manufacturer listed. The manufacturer reserves the right to modify specification without notice.